

205 HIGHLAND RANCH PARKWAY
APN 508-020-19
POWERLINE DEGRADATE CONCRETE

705 APPLE BLOSSOM DRIVE
APN 508-020-37
POIN L & BANCA K MADSON

4375 MOSES COURT
APN 508-020-39
JUDY F. HUBBARD # 1

800 APPLE BLOSSOM DRIVE
APN 508-020-32
MATTHEW S & GARY A. HOLLAND

800 APPLE BLOSSOM DRIVE
APN 508-020-32
ROBERT MITCHELL

0 APPLE BLOSSOM DRIVE
APN 508-020-32
KHALID WANGMOO # 1

1000 APPLE BLOSSOM DRIVE
APN 508-020-34
HOOD LIVING TRUST

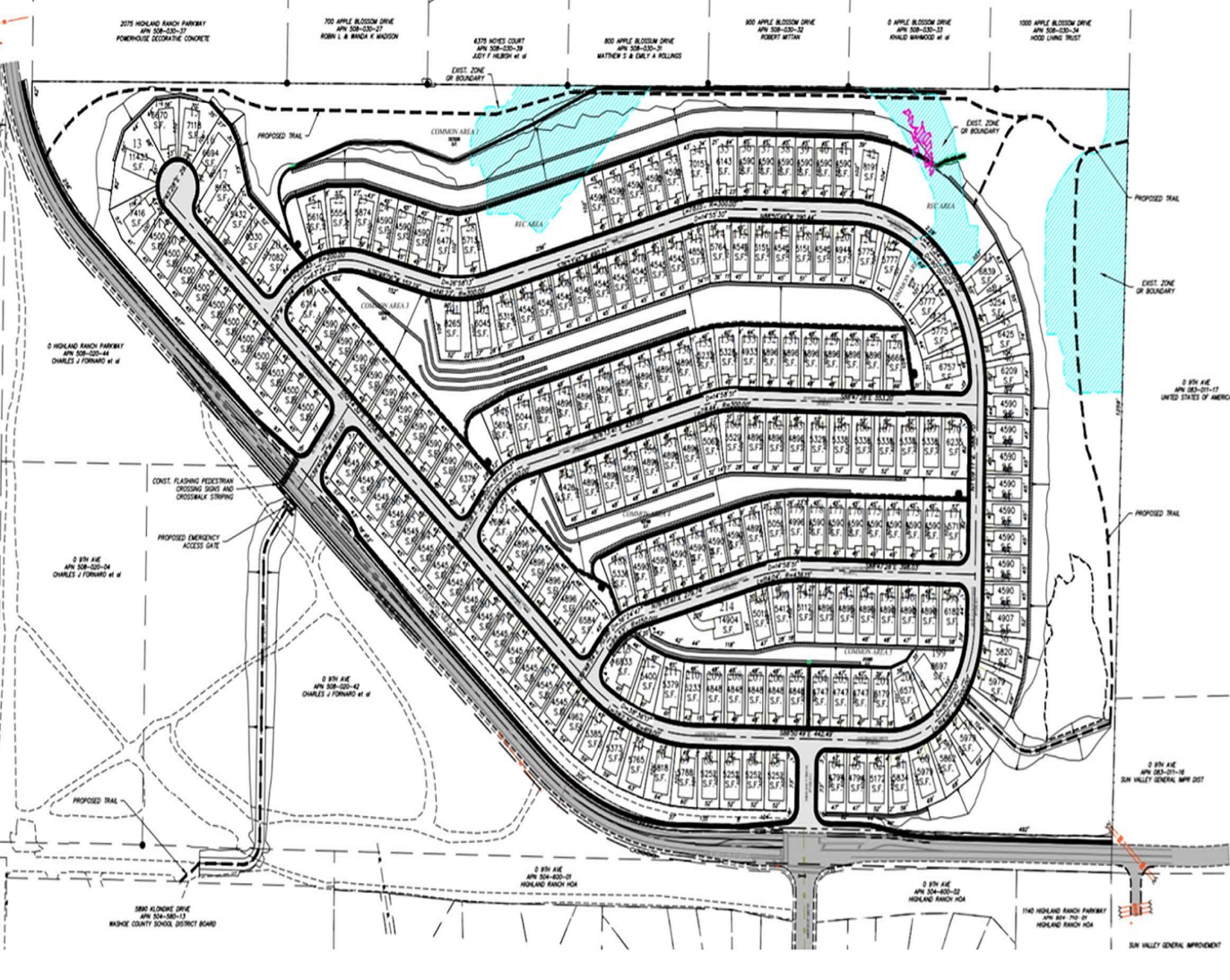
HIGHLANDS VILLAGE
OVERALL SITE PLANN

REIN. EASEMENT
WASHING COUNTY
NEBRASKA

WE DESIGN, LAND, SITE, USE, WATER, AND ENERGY
FOR THE BEST PROJECTS AND THE BEST CLIENTS
dyssey ENGINEERING
INCORPORATED



SCALE
1" = 100'



0 HIGHLAND RANCH PARKWAY
APN 508-020-44
CHARLES J FORWARD # 1

CONST. FLASHING PEDESTRIAN
CROSSING SIGN AND
ORDINARY STRIPING

PROPOSED EMERGENCY
ACCESS GATE

0 8TH AVE
APN 508-020-04
CHARLES J FORWARD # 1

0 8TH AVE
APN 508-020-42
CHARLES J FORWARD # 1

0 8TH AVE
APN 508-020-51
HIGHLAND RANCH HOA

0 8TH AVE
APN 508-020-52
HIGHLAND RANCH HOA

5880 KILBOURNE DRIVE
APN 504-088-13
WASCO COUNTY SCHOOL DISTRICT BOARD

THE HIGHLAND RANCH PARKWAY
APN 508-020-19
HIGHLAND RANCH HOA

0 8TH AVE
APN 508-020-18
SUN VALLEY GENERAL IMPROVEMENT

SUN VALLEY GENERAL IMPROVEMENT